

# \$1,720,000 - 39505 Highway 2, Blackfalds

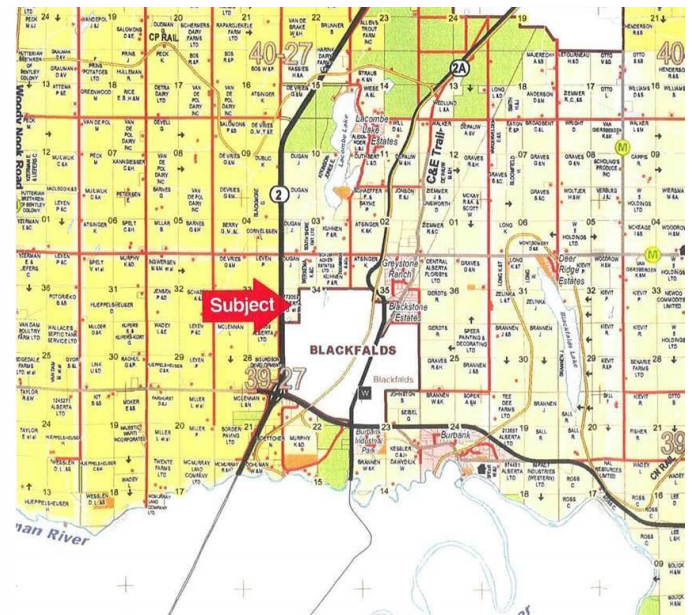
MLS® #A2016533

**\$1,720,000**

0 Bedroom, 0.00 Bathroom,  
Commercial on 73.19 Acres

NONE, Blackfalds, Alberta

73.19 ACRES of development land located east of Highway 2 in the Town of Blackfalds. Presently has Industrial Development to the south boundary and residential development to the east side. Town is open to either Industrial or residential development. Excellent exposure to Highway #2. Excellent Investment Property in one of the fastest growing communities in Alberta.



## Essential Information

MLS® #	A2016533
Price	\$1,720,000
Bathrooms	0.00
Acres	73.19
Type	Commercial
Sub-Type	Mixed Use
Status	Active

## Community Information

Address	39505 Highway 2
Subdivision	NONE
City	Blackfalds
County	Lacombe County
Province	Alberta
Postal Code	T0M 0J0

## Additional Information

Date Listed	December 28th, 2022
-------------	---------------------

Days on Market 926

Zoning AG

## **Listing Details**

Listing Office RE/MAX real estate central alberta

Data is supplied by Pillar 9â„¢ MLS® System. Pillar 9â„¢ is the owner of the copyright in its MLS® System. Data is deemed reliable but is not guaranteed accurate by Pillar 9â„¢. The trademarks MLS®, Multiple Listing Service® and the associated logos are owned by The Canadian Real Estate Association (CREA) and identify the quality of services provided by real estate professionals who are members of CREA. Used under license.