

\$200,000 - Lot 2 Tigermoth Crescent N, Rural Willow Creek No. 26, M.D. of

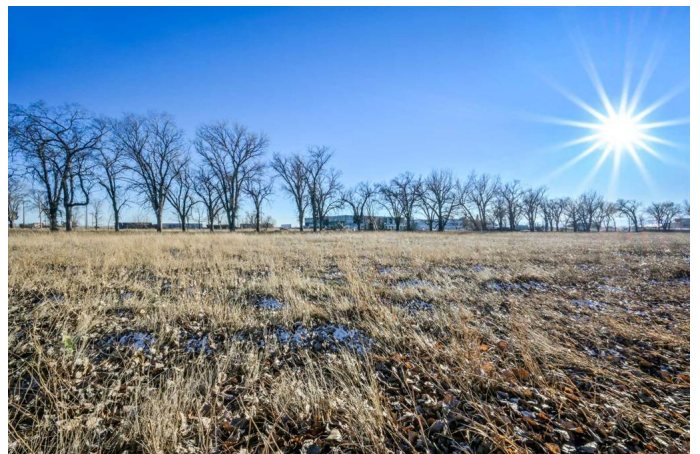
MLS® #A2092327

\$200,000

0 Bedroom, 0.00 Bathroom,
Land on 1.00 Acres

NONE, Rural Willow Creek No. 26, M.D. of,
Alberta

This 1 ACRE INDUSTRIAL LOT is SERVICED w/NO RESTRICTIONS located at the CLARESHOLM AIRPORT!!! The lot is LEVEL, TREED, PARTIALLY FENCED on Property Line, a LOCKABLE GATE, + PARTIALLY GRAVELLED. There is NO TIME CONSTRAINTS on Building a Structure on this Lot!!! As for the SERVICES: The Gas Line is through the Gate, + is Vented, Power in the Ditch, a Fire Hydrant, Sewer is on the NW Site, 3 Phase Power, Low + High Pressure Water Lines which is the Town Water, so it is Drinkable. There is Xplore Net Dish available, the Jupiter Satellite is coming in January 2024, + Fibre Optics is coming in the near future. A PERFECT LOT for your INVESTMENT OPPORTUNITY or BUSINESS!!! The Airport is serviced by a 900-meter main runway (with lighting) and 900-meter cross-strip runway that are 100' WIDE X 3100' LONG. A new asphalt topcoat will be applied to the main runway this Fall. The MD of Willow Creek has among the lowest tax rates in Southern Alberta, property taxes are dependent upon the size of the structure/amenities. The airport is located only minutes from Claresholm, also located conveniently an HOUR south of Calgary or 45 minutes from Lethbridge. This investment offers GREAT Value for the \$\$\$!!!



Essential Information

MLS® #	A2092327
Price	\$200,000
Bathrooms	0.00
Acres	1.00
Type	Land
Sub-Type	Commercial Land
Status	Active

Community Information

Address	Lot 2 Tigermoth Crescent N
Subdivision	NONE
City	Rural Willow Creek No. 26, M.D. of
County	Willow Creek No. 26, M.D. of
Province	Alberta
Postal Code	T0L 0T0

Amenities

Utilities	Electricity at Lot Line, Natural Gas Available, Phone At Lot Line, Sewer Available
-----------	--

Exterior

Lot Description	Private, Rectangular Lot, Treed
-----------------	---------------------------------

Additional Information

Date Listed	December 1st, 2023
Days on Market	545
Zoning	CIA

Listing Details

Listing Office	RE/MAX HOUSE OF REAL ESTATE
----------------	-----------------------------

Data is supplied by Pillar 9â„¢ MLSÂ® System. Pillar 9â„¢ is the owner of the copyright in its MLSÂ® System. Data is deemed reliable but is not guaranteed accurate by Pillar 9â„¢. The trademarks MLSÂ®, Multiple Listing ServiceÂ® and the associated logos are owned by The Canadian Real Estate Association (CREA) and identify the quality of services provided by real estate professionals who are members of CREA. Used under license.