

\$999,000 - 226, 1111 Olympic Way Se, Calgary

MLS® #A2136747

\$999,000

0 Bedroom, 0.00 Bathroom,
Commercial on 0.00 Acres

Beltline, Calgary, Alberta

Click brochure link for more details** Arriva is a 3-storey building containing 61,499 square feet of retail and office space. The property is located in Victoria Park, Calgary's up-and-coming events and culture district. It is surrounded by historic buildings, new restaurants and green spaces bordering the Elbow River. Arriva is directly across from the Stampede Grounds and the Scotiabank Saddledome.

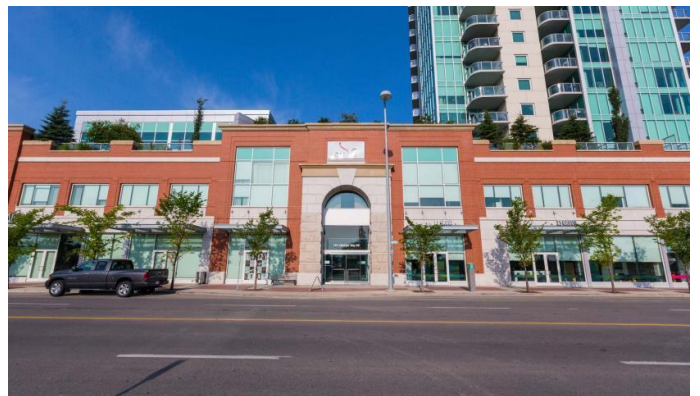
Built in 2007

Essential Information

| | |
|------------|------------|
| MLS® # | A2136747 |
| Price | \$999,000 |
| Bathrooms | 0.00 |
| Acres | 0.00 |
| Year Built | 2007 |
| Type | Commercial |
| Sub-Type | Office |
| Status | Active |

Community Information

| | |
|-------------|--------------------------|
| Address | 226, 1111 Olympic Way Se |
| Subdivision | Beltline |
| City | Calgary |
| County | Calgary |
| Province | Alberta |
| Postal Code | T2G 0L4 |



Additional Information

| | |
|----------------|----------------|
| Date Listed | May 30th, 2024 |
| Days on Market | 373 |
| Zoning | Direct Control |

Listing Details

| | |
|----------------|-----------------|
| Listing Office | Honestdoor Inc. |
|----------------|-----------------|

Data is supplied by Pillar 9â„¢ MLS® System. Pillar 9â„¢ is the owner of the copyright in its MLS® System. Data is deemed reliable but is not guaranteed accurate by Pillar 9â„¢. The trademarks MLS®, Multiple Listing Service® and the associated logos are owned by The Canadian Real Estate Association (CREA) and identify the quality of services provided by real estate professionals who are members of CREA. Used under license.