

# \$209,000 - Near Ponoka, Rural Ponoka County

MLS® #A2163842

**\$209,000**

0 Bedroom, 0.00 Bathroom,  
Land on 10.01 Acres

NONE, Rural Ponoka County, Alberta

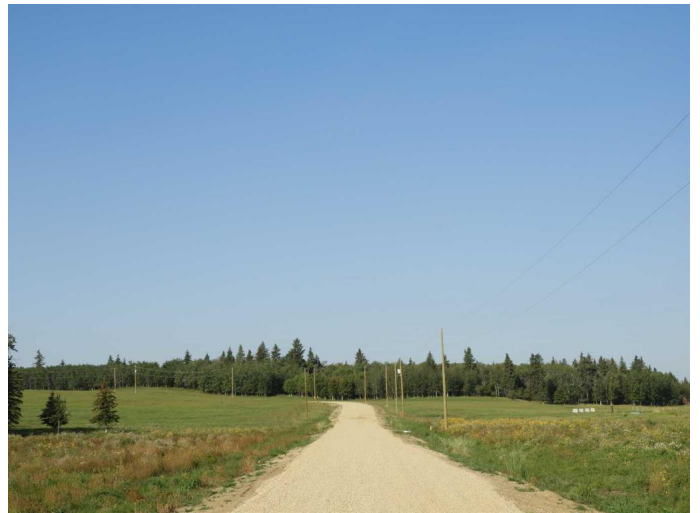
Welcome to Ponoka County's newest acreage subdivision featuring 8.6-10 acre lots zoned Country Residential. This is a premier location to design and build your dream home within a few minutes of the Town of Ponoka! Country Acres is a 9 parcel subdivision with some of the lots being treed and lots that will accommodate walk out basements. A beautiful setting with views of the countryside landscapes situated on high ground, lots of sun exposure and you can enjoy the gorgeous evening sunsets to the west! Close proximity to the Wolf Creek Golf Resort, QE2 and Highway 2A which is great for access to the highways. It is pavement right up to the Range Road 26-2 entering into Country Acres.

These lots are ready for construction - start making your plans and get ready to enjoy country living within a few minutes to Town! GST is applicable on purchase price.

## Essential Information

|           |                  |
|-----------|------------------|
| MLS® #    | A2163842         |
| Price     | \$209,000        |
| Bathrooms | 0.00             |
| Acres     | 10.01            |
| Type      | Land             |
| Sub-Type  | Residential Land |
| Status    | Active           |

## Community Information



|             |                     |
|-------------|---------------------|
| Address     | Near Ponoka         |
| Subdivision | NONE                |
| City        | Rural Ponoka County |
| County      | Ponoka County       |
| Province    | Alberta             |
| Postal Code | T0C 2J0             |

### **Amenities**

|           |                         |
|-----------|-------------------------|
| Utilities | Electricity at Lot Line |
|-----------|-------------------------|

### **Additional Information**

|                |                     |
|----------------|---------------------|
| Date Listed    | September 7th, 2024 |
| Days on Market | 187                 |
| Zoning         | CR1                 |

### **Listing Details**

|                |                                    |
|----------------|------------------------------------|
| Listing Office | RE/MAX real estate central alberta |
|----------------|------------------------------------|

Data is supplied by Pillar 9â„¢ MLSÂ® System. Pillar 9â„¢ is the owner of the copyright in its MLSÂ® System. Data is deemed reliable but is not guaranteed accurate by Pillar 9â„¢. The trademarks MLSÂ®, Multiple Listing ServiceÂ® and the associated logos are owned by The Canadian Real Estate Association (CREA) and identify the quality of services provided by real estate professionals who are members of CREA. Used under license.