

# \$2 - 84 Durum Road E, Rural Wheatland County

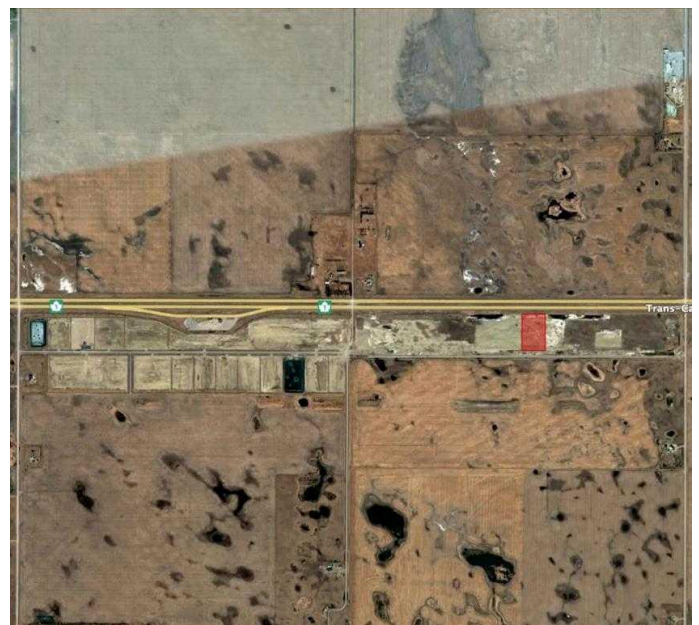
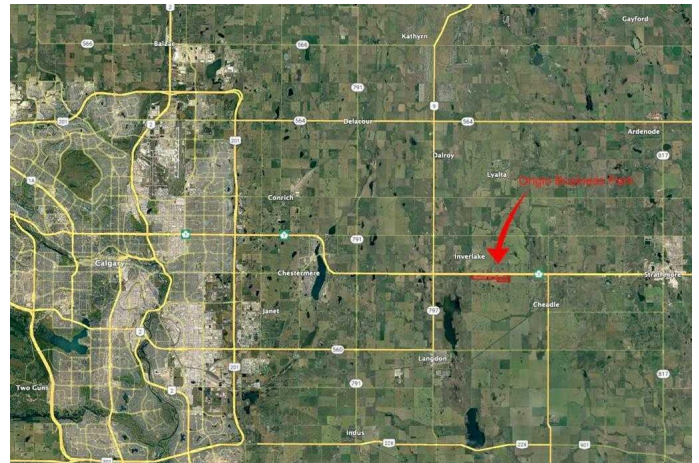
MLS® #A2190152

**\$2**

0 Bedroom, 0.00 Bathroom,  
Land on 5.00 Acres

N/A, Rural Wheatland County, Alberta

Prime Industrial/Commercial Land for Lease. Secure a long-term lease in the New Origin Business Park at Dehavlin Airport and invest in a location designed for business success. This flat, industrial/commercial-zoned land offers exceptional highway exposure and easy access to Hwy 1, just 30 minutes from downtown Calgary. With up to 5 acres available at rates as low as \$1.50 per sq. ft., this site provides flexible lot sizes tailored to your needs. Whether you're looking for a custom-built facility or a strategic hub for logistics and distribution, this prime location offers endless possibilities. Don't miss the opportunity to position your business for long-term growth. Contact us today to learn more!



## Essential Information

MLS® #	A2190152
Price	\$2
Bathrooms	0.00
Acres	5.00
Type	Land
Sub-Type	Industrial Land
Status	Active

## Community Information

Address	84 Durum Road E
Subdivision	N/A

City	Rural Wheatland County
County	Wheatland County
Province	Alberta
Postal Code	T0J 1X0

### **Amenities**

Utilities	Electricity Available, Cable Available, Water Not Available
-----------	-------------------------------------------------------------

### **Exterior**

Lot Description	Level, Cleared, Open Lot
-----------------	--------------------------

### **Additional Information**

Date Listed	February 2nd, 2025
Days on Market	68
Zoning	IG Industrial General

### **Listing Details**

Listing Office	RE/MAX House of Real Estate
----------------	-----------------------------

Data is supplied by Pillar 9â„¢ MLSÂ® System. Pillar 9â„¢ is the owner of the copyright in its MLSÂ® System. Data is deemed reliable but is not guaranteed accurate by Pillar 9â„¢. The trademarks MLSÂ®, Multiple Listing ServiceÂ® and the associated logos are owned by The Canadian Real Estate Association (CREA) and identify the quality of services provided by real estate professionals who are members of CREA. Used under license.