

# \$1,110,000 - 133 Saddlecrest Circle Ne, Calgary

MLS® #A2194701

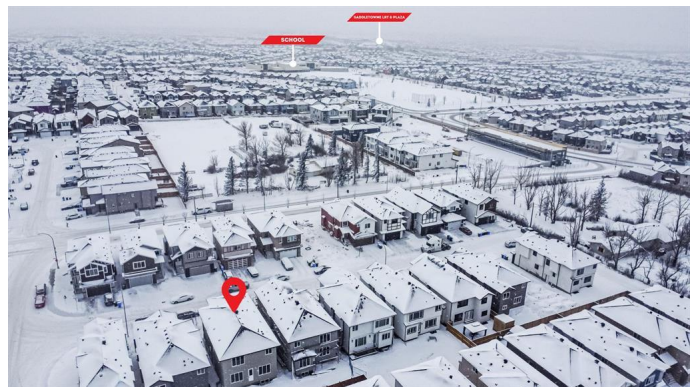
**\$1,110,000**

6 Bedroom, 5.00 Bathroom, 2,906 sqft

Residential on 0.09 Acres

Saddle Ridge, Calgary, Alberta

BRAND NEW BUILT | ATTACHED DOUBLE GARAGE | 6 BEDROOM + MAIN FLOOR DEN | 5 FULL WASHROOM | 2 BEDROOM LEGAL-SUITE BASEMENT | SPICE KITCHEN | OVER SIZED GARAGE | 3500 + SQFT OF LIVING SPACE | HEAVILY UPGRADED HOME | 2 MASTER BEDROOM | MAIN FLOOR FULL WASHROOM | PRIME LOCATION. Welcome to this stunning 6-bedroom, 5-bathroom home offering over 3,500 sqft of luxurious living space in the sought-after community of Saddleridge! Designed for both elegance and functionality, this home features a grand open-to-below entrance, where youâ€™re greeted by a breathtaking chandelier that sets the tone for luxury. The main floor boasts two spacious living rooms, perfect for hosting guests or creating separate formal and casual gathering spaces. A versatile den/home office is located on the mainfloor which can be used as a bedroom and a full bathroom addâ€™s flexibility to accommodate any lifestyle. The chefâ€™s dream kitchen is fully upgraded with built-in appliances, massive kitchen island, quartz countertops, underlit cabinetry, and an oversized spice kitchen equipped with a gas range and space for an extra fridgeâ€™ this is ideal for all your cooking needs! On the upper level, youâ€™ll find 4 well-appointed bedrooms with a mass amount of space, including two luxurious master suites with spa-like ensuites. The upstairs bonus room is perfect for movie nights, entertainment, or a



kids' play area, and the convenient upstairs laundry room with a sink makes everyday living effortless. The 2-bedroom LEGAL-SUITE basement, features large windows, generous storage, and an open-concept layout that brings in plenty of natural light. Additional highlights include underlit stairs, built-in wall features, elegant glass railings, and premium finishes throughout. The large windows flood the home with natural light, enhancing its warm and inviting ambiance. This home Located close to shopping centers, major roadways, parks, and transit, this home offers both convenience and luxury living. Donâ€™t miss this rare opportunityâ€”schedule your private showing today!

Built in 2024

**Essential Information**

MLS® #	A2194701
Price	\$1,110,000
Bedrooms	6
Bathrooms	5.00
Full Baths	5
Square Footage	2,906
Acres	0.09
Year Built	2024
Type	Residential
Sub-Type	Detached
Style	2 Storey
Status	Active

**Community Information**

Address	133 Saddlecrest Circle Ne
Subdivision	Saddle Ridge
City	Calgary
County	Calgary
Province	Alberta
Postal Code	T3J 0K4

## Amenities

Parking Spaces	4
Parking	Double Garage Attached, Insulated, Driveway, Front Drive, Garage Door Opener, Parking Pad
# of Garages	4

## Interior

Interior Features	Bar, Built-in Features, Chandelier, Closet Organizers, Granite Counters, High Ceilings, Kitchen Island, No Animal Home, No Smoking Home, Open Floorplan, Separate Entrance, Walk-In Closet(s), Crown Molding, Central Vacuum, Recessed Lighting, Wet Bar
Appliances	Built-In Oven, Dishwasher, Gas Range, Refrigerator, Washer/Dryer, Electric Cooktop
Heating	Forced Air
Cooling	None
Fireplace	Yes
# of Fireplaces	1
Fireplaces	Electric
Has Basement	Yes
Basement	Exterior Entry, Finished, Full, Suite

## Exterior

Exterior Features	None
Lot Description	Rectangular Lot
Roof	Asphalt Shingle
Construction	Wood Frame, Stucco
Foundation	Poured Concrete

## Additional Information

Date Listed	February 23rd, 2025
Days on Market	81
Zoning	R-G

## Listing Details

Listing Office	RE/MAX West Real Estate
----------------	-------------------------

Data is supplied by Pillar 9â„¢ MLS® System. Pillar 9â„¢ is the owner of the copyright in its MLS® System. Data is deemed reliable but is not guaranteed accurate by Pillar 9â„¢. The trademarks MLS®, Multiple Listing Service® and the associated logos are owned by The Canadian Real Estate Association (CREA) and identify the quality of services provided by real estate professionals who are members of CREA. Used under license.