

\$525,000 - 708 Edgefield Crescent, Strathmore

MLS® #A2221515

\$525,000

3 Bedroom, 3.00 Bathroom, 1,740 sqft
Residential on 0.09 Acres

Edgefield, Strathmore, Alberta

Welcome to Edgefield â€” A Beautifully
Updated Home in One of Strathmoreâ€™s
Most Desirable Communities!

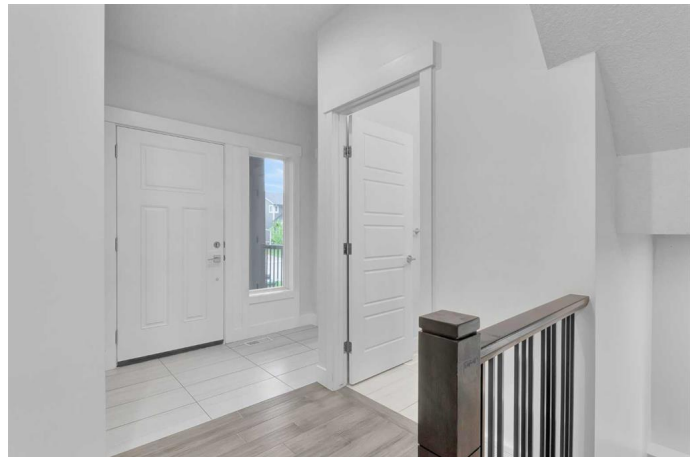
Nestled on a quiet street in the family-friendly neighborhood of Edgefield, this stunning semi-detached 2-storey home offers over 1,700 sq ft of thoughtfully designed living space, complete with 3 spacious bedrooms, 2.5 bathrooms, and a double attached garage.

Step inside and be greeted by a bright, open-concept main floor featuring fresh interior paint, durable vinyl flooring, and large windows that flood the space with natural light. The modern kitchen is a true showstopper, boasting brand new stainless steel appliances, sleek white cabinetry, quartz countertops, a large island perfect for entertaining, and a walk-through pantry for added functionality and style.

Upstairs, enjoy all-new carpeting throughout and find three generously sized bedrooms, including a tranquil primary suite with a luxurious 5-piece ensuite and a walk-in closet.

The unfinished basement is ready for your visionâ€”create a home gym, recreation room, or additional living area tailored to your lifestyle.

Step outside to your private backyard oasis, complete with a spacious deck ideal for



relaxing or hosting guests on warm summer days.

Conveniently located just minutes from schools, playgrounds, shopping, and dining, this home combines comfort, style, and unbeatable value in one of Strathmore’s most sought-after communities.

Don’t miss this move-in-ready gem—schedule your private showing today!

Built in 2015

Essential Information

MLS® #	A2221515
Price	\$525,000
Bedrooms	3
Bathrooms	3.00
Full Baths	2
Half Baths	1
Square Footage	1,740
Acres	0.09
Year Built	2015
Type	Residential
Sub-Type	Semi Detached
Style	2 Storey, Side by Side
Status	Active

Community Information

Address	708 Edgefield Crescent
Subdivision	Edgefield
City	Strathmore
County	Wheatland County
Province	Alberta
Postal Code	T1P 0G1

Amenities

Parking Spaces	4
Parking	Double Garage Attached

of Garages 2

Interior

Interior Features Ceiling Fan(s), Pantry, Quartz Counters, Soaking Tub, Walk-In Closet(s)
Appliances Dishwasher, Electric Stove, Range Hood, Refrigerator
Heating Forced Air
Cooling None
Fireplace Yes
of Fireplaces 1
Fireplaces Gas
Has Basement Yes
Basement Full, Unfinished

Exterior

Exterior Features Other
Lot Description Back Yard, Low Maintenance Landscape
Roof Asphalt Shingle
Construction Stone, Vinyl Siding, Wood Frame
Foundation Poured Concrete

Additional Information

Date Listed May 16th, 2025
Days on Market 2
Zoning R2

Listing Details

Listing Office 2% Realty

Data is supplied by Pillar 9â„¢ MLSÂ® System. Pillar 9â„¢ is the owner of the copyright in its MLSÂ® System. Data is deemed reliable but is not guaranteed accurate by Pillar 9â„¢. The trademarks MLSÂ®, Multiple Listing ServiceÂ® and the associated logos are owned by The Canadian Real Estate Association (CREA) and identify the quality of services provided by real estate professionals who are members of CREA. Used under license.