

\$995,000 - 23601 Passburg Close, Bellevue

MLS® #A2222564

\$995,000

0 Bedroom, 0.00 Bathroom,
Commercial on 0.00 Acres

NONE, Bellevue, Alberta

Here is a unique property and opportunity in Passburg, Crowsnest Pass. Located along Hwy 3 along the East entrance into the beautiful Crowsnest Pass corridor, this large 4840sqft solid ICF constructed building (with additional second storey square feet) is zoned C-2 -Drive in Commercial, and is ready to go for your business and home location. A 1500sqft shop, 1650sqft insulated quonset, 2277sqft office rooms/space, 2200sqft living quarters plus an apartment unit provide ample space and opportunity for your commercial business venture. Take advantage of the great highway exposure and all of the features/extras that this property has to offer.

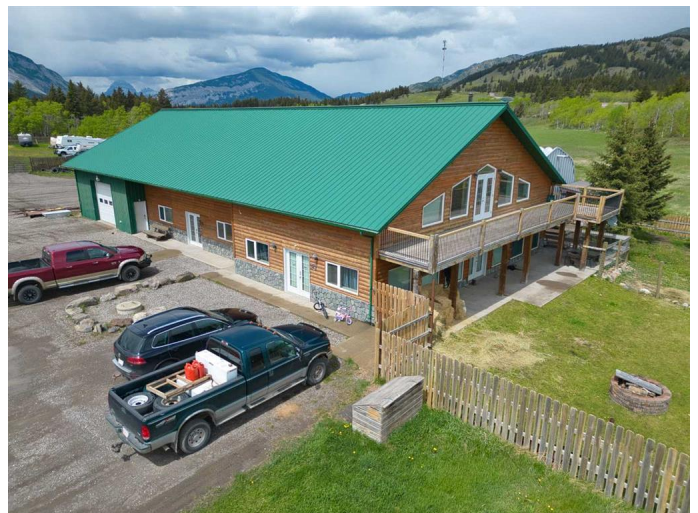
Built in 2004

Essential Information

MLS® #	A2222564
Price	\$995,000
Bathrooms	0.00
Acres	0.00
Year Built	2004
Type	Commercial
Sub-Type	Mixed Use
Status	Active

Community Information

Address	23601 Passburg Close
Subdivision	NONE



City	Bellevue
County	Crowsnest Pass
Province	Alberta
Postal Code	T0K1C0

Interior

Heating	Electric
---------	----------

Exterior

Roof	Metal
Construction	ICFs (Insulated Concrete Forms), Wood Siding
Foundation	Slab

Additional Information

Date Listed	May 21st, 2025
Days on Market	48
Zoning	C-2

Listing Details

Listing Office	Century 21 Foothills South Real Estate
----------------	--

Data is supplied by Pillar 9â„¢ MLS® System. Pillar 9â„¢ is the owner of the copyright in its MLS® System. Data is deemed reliable but is not guaranteed accurate by Pillar 9â„¢. The trademarks MLS®, Multiple Listing Service® and the associated logos are owned by The Canadian Real Estate Association (CREA) and identify the quality of services provided by real estate professionals who are members of CREA. Used under license.