

# \$549,900 - 694083 Range Road 104, Rural Grande Prairie No. 1, County of

---

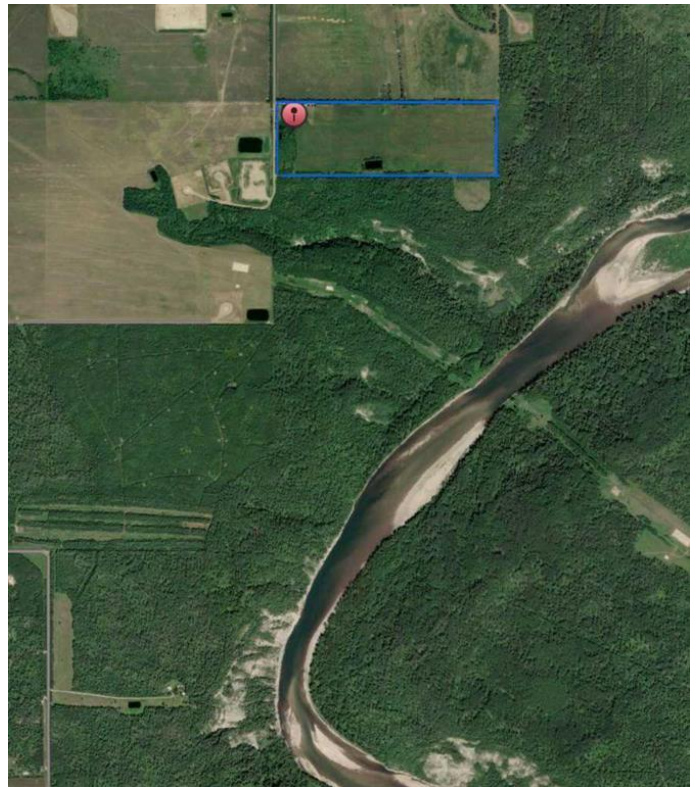
MLS® #A2222748

**\$549,900**

4 Bedroom, 2.00 Bathroom, 1,189 sqft  
Residential on 54.92 Acres

NONE, Rural Grande Prairie No. 1, County of, Alberta

Private 55-Acre Acreage Backing Onto Crown Land With River Access! Discover peace, privacy, and endless outdoor opportunities on this stunning 55-acre property, located just 45 minutes southwest of Grande Prairie near Hinton Trail Hall. Tucked away on a quiet dead-end road, this serene acreage backs directly onto crown land, offering access to the Wapiti River and unmatched recreational potential right out your back door. The charming 1980s farmhouse has been thoughtfully updated and include vinyl windows, paint & flooring, a durable tin roof, a renovated main bathroom and kitchen, a new furnace, hot water tank, and central A/C. The bright, open-concept main floor boasts a kitchen, dining, and living area filled with natural light and warmed by a cozy wood-burning fireplace. Upstairs, youâ€™ll find two bedrooms including an oversized primary retreat with a walk-in closet. The finished basement adds two additional bedrooms, a half bath, laundry room, two flex spaces, and plenty of storage, perfect for a growing family. Outdoors, youâ€™ll find an oversized 26x44 heated garage with 220V power, a chicken coop with fenced enclosure, and five outbuildings serving as a barn, workshop, and storage sheds. Approximately 45 acres are currently in hay, and the land is serviced by three dugoutsâ€”one of which has



been transformed into a private recreational pond, while the others provide treated household water with a filtration system, softener, and chlorinator. The beautifully treed yard features mature spruce and pine, ornamental apple trees, raised garden beds, and a firepit area—ideal for enjoying quiet evenings under the stars. Backed by crown land, this acreage offers unmatched recreational freedom—whether it's hiking, horseback riding, quadding, hunting, or simply exploring Alberta's vast wilderness. With only 4.8 km of gravel road off paved Range Road 110, this property offers both seclusion and accessibility. If you've been dreaming of a peaceful rural lifestyle with the bonus of outdoor adventure at your fingertips, this property is a must-see.

Built in 1980

**Essential Information**

MLS® #	A2222748
Price	\$549,900
Bedrooms	4
Bathrooms	2.00
Full Baths	1
Half Baths	1
Square Footage	1,189
Acres	54.92
Year Built	1980
Type	Residential
Sub-Type	Detached
Style	Acreage with Residence, Bungalow
Status	Active

**Community Information**

Address	694083 Range Road 104
Subdivision	NONE
City	Rural Grande Prairie No. 1, County of

County Grande Prairie No. 1, County  
Province Alberta  
Postal Code T0H 1J0

Amenities

Parking Quad or More Detached

Interior

Interior Features Laminate Counters  
Appliances Dishwasher, Electric Stove, F  
Heating Forced Air, Propane  
Cooling Central Air  
Fireplace Yes  
# of Fireplaces 1  
Fireplaces Wood Burning  
Has Basement Yes  
Basement Finished, Full

Exterior

Exterior Features Private Yard  
Lot Description Treed  
Roof Metal  
Construction Wood Frame  
Foundation Poured Concrete

Additional Information

Date Listed May 20th, 2025  
Days on Market 12  
Zoning AG

Listing Details

Listing Office Sutton Group Grande Prairie Professionals

Data is supplied by Pillar 9â„¢ MLSÂ® System. Pillar 9â„¢ is the owner of the copyright in its MLSÂ® System. Data is deemed reliable but is not guaranteed accurate by Pillar 9â„¢. The trademarks MLSÂ®, Multiple Listing ServiceÂ® and the associated logos are owned by The Canadian Real Estate Association (CREA) and identify the quality of services provided by real estate professionals who are members of CREA. Used under license.

