

# \$359,900 - 141 Mitchell Drive, Fort McMurray

MLS® #A2222921

**\$359,900**

3 Bedroom, 2.00 Bathroom, 1,204 sqft  
Residential on 0.09 Acres

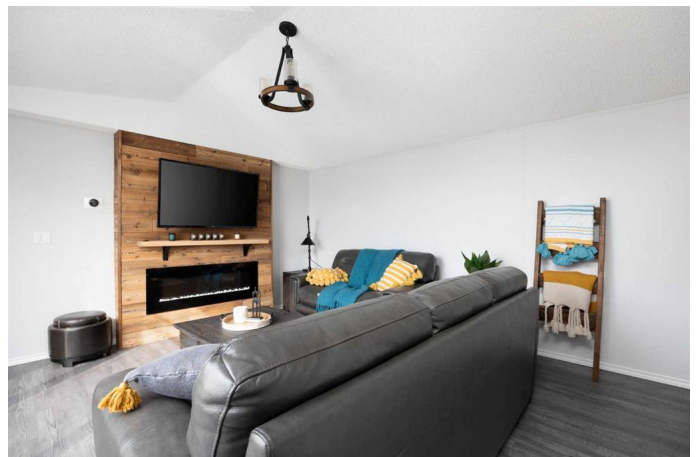
Timberlea, Fort McMurray, Alberta

Welcome to 141 Mitchell Drive, a stunning 3-bedroom home in the serene community of Morgan Heights, Timberlea. This standout property offers a perfect blend of modern elegance and thoughtful design.

Every detail of this home exudes a touch of glamour, from the sleek lighting fixtures to the crisp white kitchen cabinetry, all meticulously selected to create a sense of luxury. The living room is bathed in natural light, thanks to its expansive windows, giving the space a bright and airy ambiance. The kitchen, the heart of the home, boasts skylights that enhance its inviting atmosphere. It has ample counter space, cabinetry, and a large pantry for effortless organization. This area is complete with modern finishes that make it both functional and stylish. You also have a gorgeous laundry area from the kitchen with door access to the side of the home.

The primary bedroom is a true retreat, featuring a spa-inspired 4-piece ensuite with a corner soaking tub, a chic vanity, and a stand-up shower. The two additional bedrooms towards the front of the property are generously sized and share a well-appointed 4-piece main bath.

Step outside to discover a backyard designed for relaxation and entertaining. The large deck, complete with a charming gazebo, is ideal for entertaining. A single attached garage and



driveway provide ample parking options, adding to the practicality of this home.

141 Mitchell Drive isn't just a house—it's a lifestyle upgrade. With its little luxuries, modern touches, and inviting spaces, it's the perfect place to call home. Check out the photos, floor plan and 3D tour, and call today to book your personal viewing.

Built in 2003

**Essential Information**

MLS® #	A2222921
Price	\$359,900
Bedrooms	3
Bathrooms	2.00
Full Baths	2
Square Footage	1,204
Acres	0.09
Year Built	2003
Type	Residential
Sub-Type	Detached
Style	Double Wide Mobile Home
Status	Active

**Community Information**

Address	141 Mitchell Drive
Subdivision	Timberlea
City	Fort McMurray
County	Wood Buffalo
Province	Alberta
Postal Code	T9K 2P1

**Amenities**

Amenities	Trash
Parking Spaces	3
Parking	Driveway, Heated Garage, Single Garage Attached
# of Garages	1

## Interior

Interior Features	Pantry, Quartz Counters, Separate Entrance, Skylight(s), Soaking Tub, Vaulted Ceiling(s)
Appliances	Dishwasher, Dryer, Refrigerator, See Remarks, Stove(s), Washer, Window Coverings
Heating	Forced Air, Natural Gas
Cooling	None
Basement	None

## Exterior

Exterior Features	Other, Storage
Lot Description	Front Yard, Standard Shaped Lot
Roof	Asphalt Shingle
Construction	Vinyl Siding
Foundation	Piling(s)

## Additional Information

Date Listed	May 22nd, 2025
Days on Market	21
Zoning	RMH-1

## Listing Details

Listing Office	ROYAL LEPAGE BENCHMARK
----------------	------------------------

Data is supplied by Pillar 9â„¢ MLS® System. Pillar 9â„¢ is the owner of the copyright in its MLS® System. Data is deemed reliable but is not guaranteed accurate by Pillar 9â„¢. The trademarks MLS®, Multiple Listing Service® and the associated logos are owned by The Canadian Real Estate Association (CREA) and identify the quality of services provided by real estate professionals who are members of CREA. Used under license.