

# \$1,195,000 - 8, 15015 Township 424, Rural Ponoka County

---

MLS® #A2223103

**\$1,195,000**

6 Bedroom, 4.00 Bathroom, 3,289 sqft  
Residential on 3.96 Acres

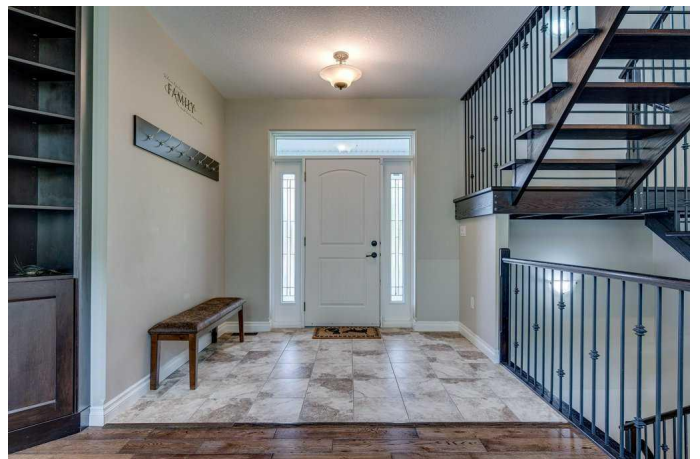
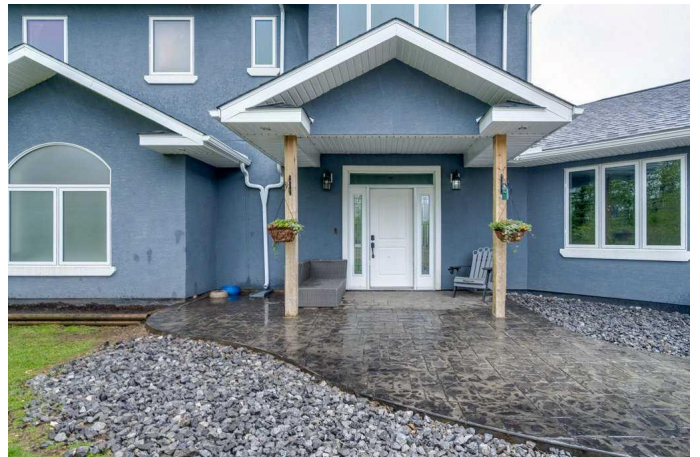
NONE, Rural Ponoka County, Alberta

Stunning Acreage Retreat â€” 3.96 Acres Just 9 Minutes East of Rimbey!

Discover this beautifully updated & meticulously maintained two-story home offering nearly 4 acres of park-like surroundings. With mature trees, extensive landscaping, & a southwest-facing backyard, this property provides privacy, natural beauty, & endless outdoor space for relaxation or play. Step inside & kitchen area, and an abundance of built-in cabinetry throughout. The chefâ€™s kitchen includes a brand-new oven (April 2025) & flows seamlessly into the large dining areaâ€”perfect for entertaining. The massive main floor laundry room is fully equipped with cabinetry, a utility sink, & built-ins at the rear entry for coats and boots.

The main floor master suite is a serene retreat with views of your treed property, a generous walk-in closet, a luxurious ensuite with a huge tiled shower, his & her sinks, & a deep soaker tub. Upstairs, two spacious bedrooms & a large bonus room offers great space for family or guests.

The bright, fully finished walk-out basement is a showstopper, boasting in-floor heating, two oversized bedrooms, a full bath, a potential future wet bar area, theater & games spaces, & a massive utility/storage room. The basement opens to a stamped concrete patio, already set with two posts for your future deck plans.



Additional features include: Hunter Douglas Blinds~ New control board on the furnace~ High-efficiency furnace plus air conditioner Water filtration system with updated flow switch for chlorine control~ Built-in vacuum system ( with new hose that has a 10 year warranty)~New stamped concrete walkways & front apron~ Septic cleaned (Sept 2024)~ Gas fireplace (awaiting final finish)  
Huge garage with sink, drain, & three large overhead doors

Built in 2013

### Essential Information

MLS® #	A2223103
Price	\$1,195,000
Bedrooms	6
Bathrooms	4.00
Full Baths	3
Half Baths	1
Square Footage	3,289
Acres	3.96
Year Built	2013
Type	Residential
Sub-Type	Detached
Style	2 Storey, Acreage with Residence
Status	Active

### Community Information

Address	8, 15015 Township 424
Subdivision	NONE
City	Rural Ponoka County
County	Ponoka County
Province	Alberta
Postal Code	T0C 2J0

### Amenities

Parking	Triple Garage Attached
# of Garages	3

## Interior

Interior Features	Bookcases, Central Vacuum, High Ceilings
Appliances	Other
Heating	Forced Air, Natural Gas
Cooling	Central Air
Fireplace	Yes
# of Fireplaces	1
Fireplaces	Gas, Living Room
Has Basement	Yes
Basement	Finished, Full

## Exterior

Exterior Features	Other
Lot Description	Landscaped
Roof	Asphalt
Construction	Stucco
Foundation	Poured Concrete

## Additional Information

Date Listed	May 21st, 2025
Days on Market	14
Zoning	CR

## Listing Details

Listing Office	Royal LePage Network Realty Corp.
----------------	-----------------------------------

Data is supplied by Pillar 9â„¢ MLSÂ® System. Pillar 9â„¢ is the owner of the copyright in its MLSÂ® System. Data is deemed reliable but is not guaranteed accurate by Pillar 9â„¢. The trademarks MLSÂ®, Multiple Listing ServiceÂ® and the associated logos are owned by The Canadian Real Estate Association (CREA) and identify the quality of services provided by real estate professionals who are members of CREA. Used under license.