

\$339,900 - 116, 1005a Westmount Drive, Strathmore

MLS® #A2225666

\$339,900

2 Bedroom, 2.00 Bathroom, 961 sqft

Residential on 0.00 Acres

Westmount_Strathmore, Strathmore, Alberta

Modern 2 Bed, 2 Bath Corner Unit with 1 (2 spots)Parking Stalls Plus 1 out side Parking in Strathmore Lakes Estates

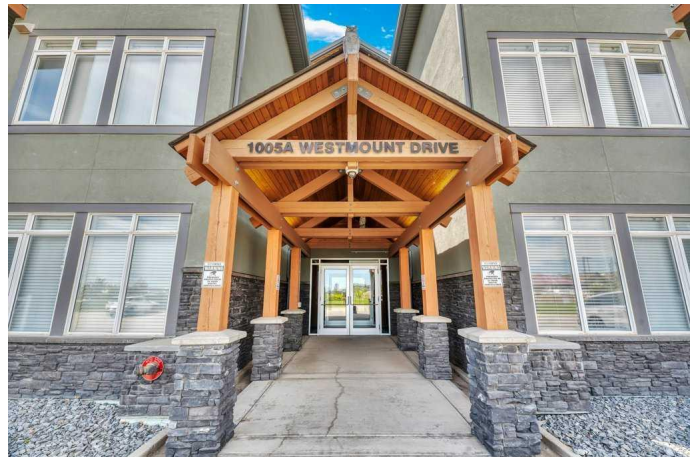
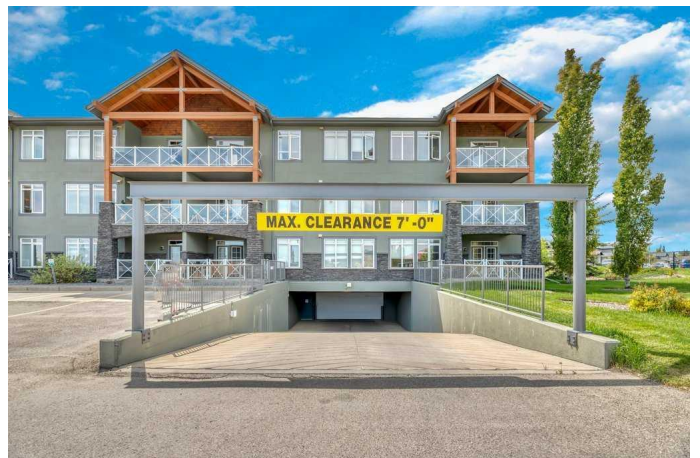
Welcome to Unit #116 at 1005A Westmount Drive in The Savana – a spacious, bright, and beautifully updated main floor corner unit that's move-in ready!

Freshly painted and featuring Central Air in the living area, this unit offers 9'™ ceilings and an open-concept layout perfect for entertaining. The stylish kitchen includes granite countertops, a breakfast bar, and ample cabinet space for storage and meal prep.

The cozy living room boasts a gas fireplace and provides direct access to a large private patio with gas BBQ hook-up, overlooking a peaceful green space – a perfect spot to relax outdoors.

The primary bedroom is generously sized and features a walk-through closet leading to a private 4-piece ensuite. The second bedroom is located on the opposite side of the unit, offering great privacy for guests, kids, or a roommate, with a second full 4-piece bathroom just steps away.

Additional highlights include in-suite laundry, two titled parking stalls (one heated underground can park 2 cars with a secure



storage locker, and one oversized surface stall just outside the patio gate), and a welcoming front entry with extra closet space.

Located in the sought-after Strathmore Lakes Estates community – right across from the lake, scenic walking paths, and a playground – this home combines comfort, convenience, and lifestyle.

?? Donâ€™t miss out – book your showing today!

Built in 2014

Essential Information

MLS® #	A2225666
Price	\$339,900
Bedrooms	2
Bathrooms	2.00
Full Baths	2
Square Footage	961
Acres	0.00
Year Built	2014
Type	Residential
Sub-Type	Apartment
Style	Single Level Unit
Status	Active

Community Information

Address	116, 1005a Westmount Drive
Subdivision	Westmount_Strathmore

City	Strathmore
County	Wheatland County
Province	Alberta
Postal Code	T1P 0C3

Amenities

Amenities	Playground, Visitor Parking, Snow Removal, Trash
Parking Spaces	3
Parking	Garage Door Opener, Parking Pad, Underground

Interior

Interior Features	See Remarks, Elevator
Appliances	Central Air Conditioner, Dishwasher, Dryer, Electric Stove, Garage Control(s), Microwave Hood Fan, Refrigerator, Washer
Heating	In Floor, Natural Gas
Cooling	Central Air
Fireplace	Yes
# of Fireplaces	1
Fireplaces	Gas, Living Room
# of Stories	3

Exterior

Exterior Features	Balcony
Construction	Stone, Stucco

Additional Information

Date Listed	May 28th, 2025
Days on Market	6
Zoning	R3

Listing Details

Listing Office	CIR Realty
----------------	------------

Data is supplied by Pillar 9â„¢ MLS® System. Pillar 9â„¢ is the owner of the copyright in its MLS® System. Data is deemed reliable but is not guaranteed accurate by Pillar 9â„¢. The trademarks MLS®, Multiple Listing Service® and the associated logos are owned by The Canadian Real Estate Association (CREA) and identify the quality of services provided by real estate professionals who are members of CREA. Used under license.