

\$2,580,000 - West Bragg Creek Road, Rural Rocky View County

MLS® #A2225781

\$2,580,000

0 Bedroom, 0.00 Bathroom,
Land on 89.38 Acres

NONE, Rural Rocky View County, Alberta

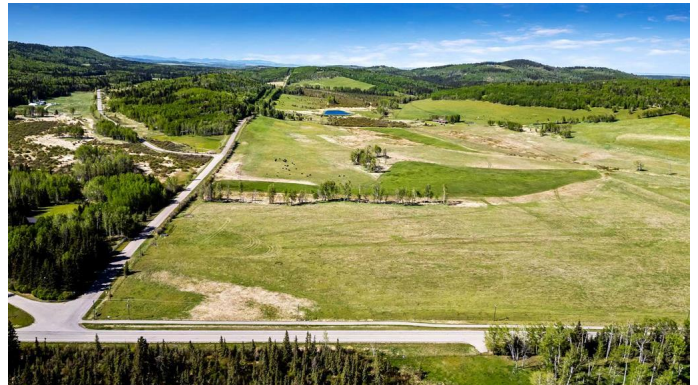
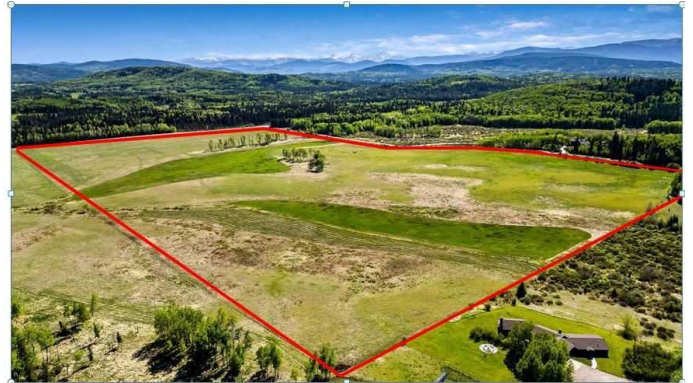
An inviting 89.38 acres of Alberta Gold just minutes from Bragg Creek just hit the market! Here is your opportunity to own prime property within the heart of West Bragg Creek Area Structure Plan. Offering the perfect setting for country living, development, and or summer pasture all with excellent road access from West Bragg Creek Road & RR 52. Surrounded by beauty of the Kananaskis, rolling hills, and wildlife making it a unique and inspiring investment opportunity. PLEASE DO NOT WALK OR DRIVE ON THE PROPERTY WITHOUT PERMISSION. THERE ARE CATTLE GRAZING Call for details. (SW Section 14, Township 23, Range 5, W of 5 89.38 acres.)

Essential Information

| | |
|-----------|-----------------|
| MLS® # | A2225781 |
| Price | \$2,580,000 |
| Bathrooms | 0.00 |
| Acres | 89.38 |
| Type | Land |
| Sub-Type | Commercial Land |
| Status | Active |

Community Information

| | |
|-------------|-----------------------|
| Address | West Bragg Creek Road |
| Subdivision | NONE |



| | |
|-------------|-------------------------|
| City | Rural Rocky View County |
| County | Rocky View County |
| Province | Alberta |
| Postal Code | T0L 1L0 |

Additional Information

| | |
|----------------|----------------|
| Date Listed | May 29th, 2025 |
| Days on Market | 51 |
| Zoning | A-SML |

Listing Details

| | |
|----------------|------------------------|
| Listing Office | Royal LePage Solutions |
|----------------|------------------------|

Data is supplied by Pillar 9â„¢ MLS® System. Pillar 9â„¢ is the owner of the copyright in its MLS® System. Data is deemed reliable but is not guaranteed accurate by Pillar 9â„¢. The trademarks MLS®, Multiple Listing Service® and the associated logos are owned by The Canadian Real Estate Association (CREA) and identify the quality of services provided by real estate professionals who are members of CREA. Used under license.