

# \$224,900 - 5820 Birch Crescent, High Prairie

MLS® #A2227249

## \$224,900

6 Bedroom, 2.00 Bathroom, 1,008 sqft  
Residential on 0.12 Acres

NONE, High Prairie, Alberta

A 1,008-square-foot home offers an impressive five bedrooms, with three located upstairs and two on the lower level—both featuring full-sized windows that create the illusion of an upper-floor setting. The home includes two bathrooms and a spacious open-concept layout, combining the dining room, kitchen, and living room for a seamless flow. The kitchen has been tastefully updated with freshly painted cabinets, new countertops, and a modern double sink. Step outside to the walk-out upper deck, where you can enjoy views of the beautifully shaded backyard, complete with mature trees and a convenient storage shed. The large basement family room provides additional living space, perfect for relaxation or entertainment. Ideally situated near public schools, this home is both functional and conveniently located. Immediate possession available - call today to book your viewing.



Built in 1990

## Essential Information

MLS® #	A2227249
Price	\$224,900
Bedrooms	6
Bathrooms	2.00
Full Baths	2
Square Footage	1,008
Acres	0.12

Year Built	1990
Type	Residential
Sub-Type	Detached
Style	Bi-Level
Status	Active

### **Community Information**

Address	5820 Birch Crescent
Subdivision	NONE
City	High Prairie
County	Big Lakes County
Province	Alberta
Postal Code	T0G 1E0

### **Amenities**

Parking Spaces	2
Parking	Parking Pad

### **Interior**

Interior Features	Ceiling Fan(s), Storage
Appliances	Refrigerator, Stove(s), Washer/Dryer
Heating	Forced Air
Cooling	None
Has Basement	Yes
Basement	Finished, Full

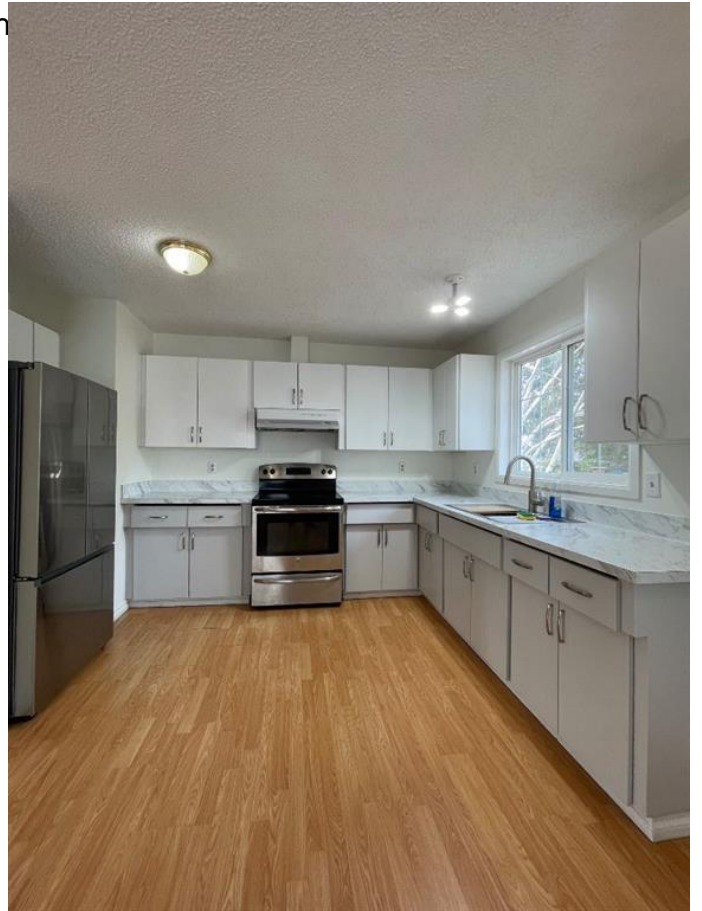
### **Exterior**

Exterior Features	Private Yard, Storage
Lot Description	Back Yard
Roof	Asphalt Shingle
Construction	Vinyl Siding
Foundation	Poured Concrete

### **Additional Information**

Date Listed	June 3rd, 2025
Days on Market	49
Zoning	Residential

### **Listing Details**



Data is supplied by Pillar 9â„¢ MLS® System. Pillar 9â„¢ is the owner of the copyright in its MLS® System. Data is deemed reliable but is not guaranteed accurate by Pillar 9â„¢. The trademarks MLS®, Multiple Listing Service® and the associated logos are owned by The Canadian Real Estate Association (CREA) and identify the quality of services provided by real estate professionals who are members of CREA. Used under license.